



HIV Infection Remains a Serious Problem

Up to 25% – or about 9,000 – of the 36,000 HIV+ Illinois residents do not know they are HIV+, according to state health experts. Unaware of their HIV infection, undiagnosed individuals spread HIV to others through unprotected sex, intravenous drug use, or other ways. Undiagnosed individuals also do not receive the benefit of medical treatments that can slow the progression of HIV infection into AIDS or other illnesses.

Illinois has the nation's seventh highest cumulative number of AIDS cases among states, according to the Illinois Department of Public Health, with more than 63,000 reported cases and 23,000 deaths since 1981.



Illinois Public Health Association
223 S. Third Street
Springfield, IL 62701-1144



Extending treatment and prevention across Illinois





Contact your local Illinois HIV Care Connect office to enroll or refer

Illinois HIV Care Connect is an extensive, statewide network of medical case management, health care and support services for people living with HIV. By enrolling, HIV+ individuals can find the services they need to achieve optimal health and self-sufficiency. Health care providers treating HIV+ individuals are encouraged to refer them to Illinois HIV Care Connect.

Medical case management, health care & support

Once enrolled in Illinois HIV Care Connect, people living with HIV receive confidential medical case management services at no charge, regardless of income. Also, they may qualify* for a range of other services, such as:

- Outpatient/ambulatory health care
- Mental health care • Oral health care
- Medical nutritional therapy
- Substance abuse services (outpatient)
- Food bank • Legal assistance
- Medical transportation
- Psychosocial support • Rehabilitation
- Utility and short-term rent assistance

Go to www.hivcareconnect.com today to learn more



Photos are used for illustrative purposes only and all persons depicted are models.

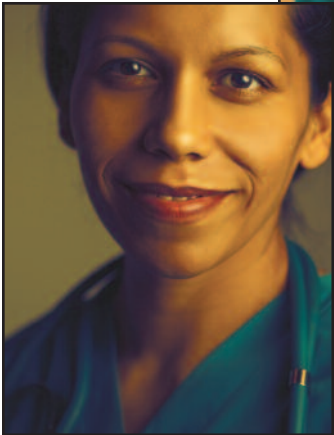
Visit the **Illinois HIV Care Connect Web site** for information about your regional office. The Web site also links to:

- Training and educational opportunities for clinicians, case managers and people with HIV.
- Regular HIV news updates.
- A survey and the opportunity to join or become involved in the HIV Care Connect network.



By contacting Illinois HIV Care Connect, you extend your ability to stop the spread and progression of HIV.

* Individuals qualify for services according to their income and insurance status. Not all services may be available, and the nature of services may vary, by regional office.



Regional Offices

Region 1: Northwest Illinois
 Winnebago County Health Department
 401 Division Street
 PO Box 4009
 Rockford, IL 61110-0509
 815-720-4071

Region 2: Heart of Illinois
 University of Illinois
 College of Medicine -- Peoria
 Heart of Illinois HIV/AIDS Center
 One Illini Drive
 Box 1649
 Peoria, IL 61656-1649
 800-801-8751 • 800-526-0857 TTY

Region 3: Central Illinois
 Southern Illinois University
 School of Medicine
 Division of Infectious Diseases
 P.O. Box 19636
 Springfield, IL 62794-9636
 888-308-8105

Region 4: Southwest Illinois
 St. Clair County Health Department
 #19 Public Square
 Suite 150
 Belleville, IL 62220-1695
 618-233-7703

Region 5: Southern Illinois
 Jackson County Health Department
 415 Health Department Road
 P.O. Box 307
 Murphysboro, IL 62966-6108
 877-745-1424

Region 6: East Central Illinois
 Champaign-Urbana
 Public Health District
 201 W. Kenyon Road
 Champaign, IL 61820
 888-801-3172

**Regions 7 and 8:
 Collar Counties and Cook County**
 AIDS Foundation of Chicago
 200 W. Jackson
 Suite 2200
 Chicago, IL 60606
 312-922-2322

